

Aquarius Developers - Phase V



BLOCK A1 ELEVATION

Pool facing 2 Bedroom Apartments at Chaudi Wado, Marna, Siolim, Bardez - Goa

A Project by



Aquarius KAD Developers, a trusted name in construction, bring you phase 5 of their sprawling project, 'Aquarius Developers Phase V', a purely residential scheme of varying sizes of two bedroom apartments set in a peaceful scenic setting at Siolim - Goa.

Ideally located, the homes are situated in a quiet residential locality away from the hustle bustle of urban life and pollution, yet are in close proximity to all urban amenities and conveniences essential to everyday living.

Designed and executed with attention to detail the homes have a high ventilation ratio with generous fenestrations and unique features like uninterrupted water supply with backup, power backup for street lights/ common lights and segregation & disposal of garbage.

'Aquarius Developers Phase V', is the perfect gift for your family and a wise investment for generations to enjoy!



Project Specifications

R.C.C Frame Structure.

23 cms thick laterite stone Masonary for Peripheral walls. Fly Ash Brick Masonary for internal walls. Sand Cement Mortar Plaster for Internal walls with wall ready putty. Sand faced double coat plaster for external walls with grooves/bands.

Vitrified tiles for all rooms. Toilet: Ceramic tiles with full height Dado (wall).

Granite kitchen platform with stainless steel sink and 2 feet high wall tiles for kitchen wall.

Hindware/Cera brand W.C with cistern and counter basin/basin with half pedestal for all toilets.

Powder coated aluminium sliding windows/French doors with 4mm/5mm thick reflective glass.

Main Door – Teak wood frame and door shutter.

Internal Doors – Sal wood door frame with FRP shutter/Flush door shutter.

Plaster of Paris corner moulding for living, Kitchen and bedroom ceiling.

Internal Paint – Premium Emulsion.

External Paint – Weather proof of brand Asian/ICI Dulux.

Plumbing – CPVC concealed piping. Chrome plated fittings of brand Jaguar/Hindware.

Switches – Semi-modular.

Scheme Layout



Project Amenities

Large Swimming Pool with attached children's Pool.

Club house with gymnasium.

Tennis Court cum open air venue to host functions.

Proportionately maintained open space for gazebo, landscape, paving etc.

Decorative street & garden lights.

Air Conditioner points in living and bedrooms.

Electrical wiring provision for inverter.

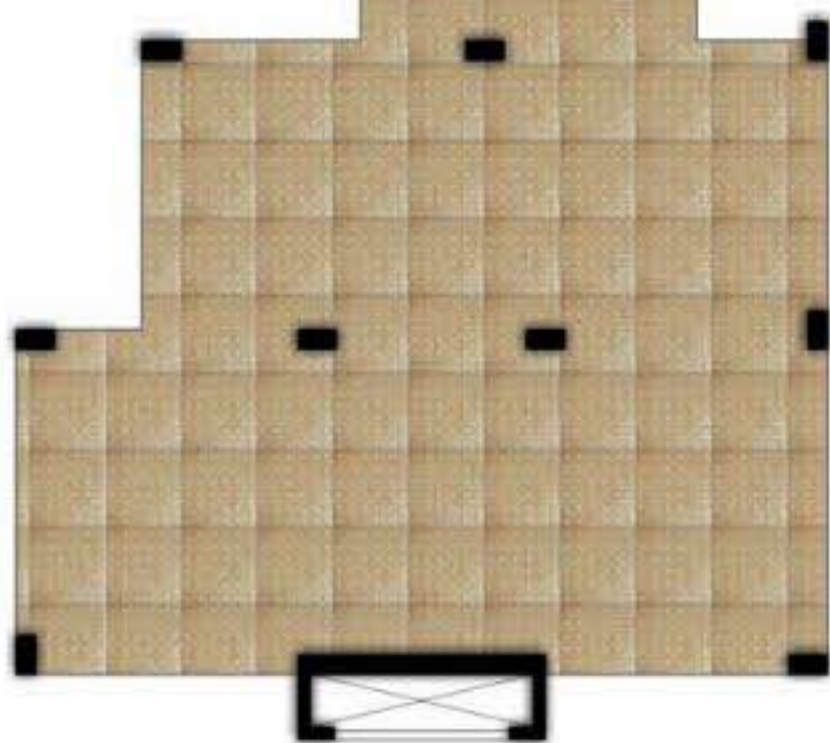
Stilt (covered parking) for vehicles.

BLOCK B1
ELEVATION





Block A 1- Ground Floor Plan



Block A 1 Elevation



Flat nos.	Carpet Area	Super built-up Area
A1 - 011	56.20 Sqm	70.31 Sqm
A1 - 012	53.22 Sqm	66.12 Sqm
A1 - 013	53.22 Sqm	66.57 Sqm



Block A 1 - First Floor Plan

Flat nos.	Carpet Area	Super Built-up Area
A1 - 111	71.32 Sqm	88.49 Sqm
A1 - 112	67.70 Sqm	83.26 Sqm
A1 - 113	67.70 Sqm	83.26 Sqm
A1 - 114	86.18 Sqm	106.29 Sqm
A1 - 115	68.06 Sqm	83.93 Sqm



Block A1 - Second Floor Plan

Flat nos.	Carpet Area	Super Built-up Area
A1 -211	69.31 Sqm	88.49 + 78.24 Sqmt OT
A1 -212	67.70 Sqm	83.26 Sqm
A1 -213	67.70 Sqm	83.26 Sqm
A1 -214	84.18 Sqm	106.29 +98.34 Sqmt OT
A1 -215	68.06 Sqm	83.96 Sqm

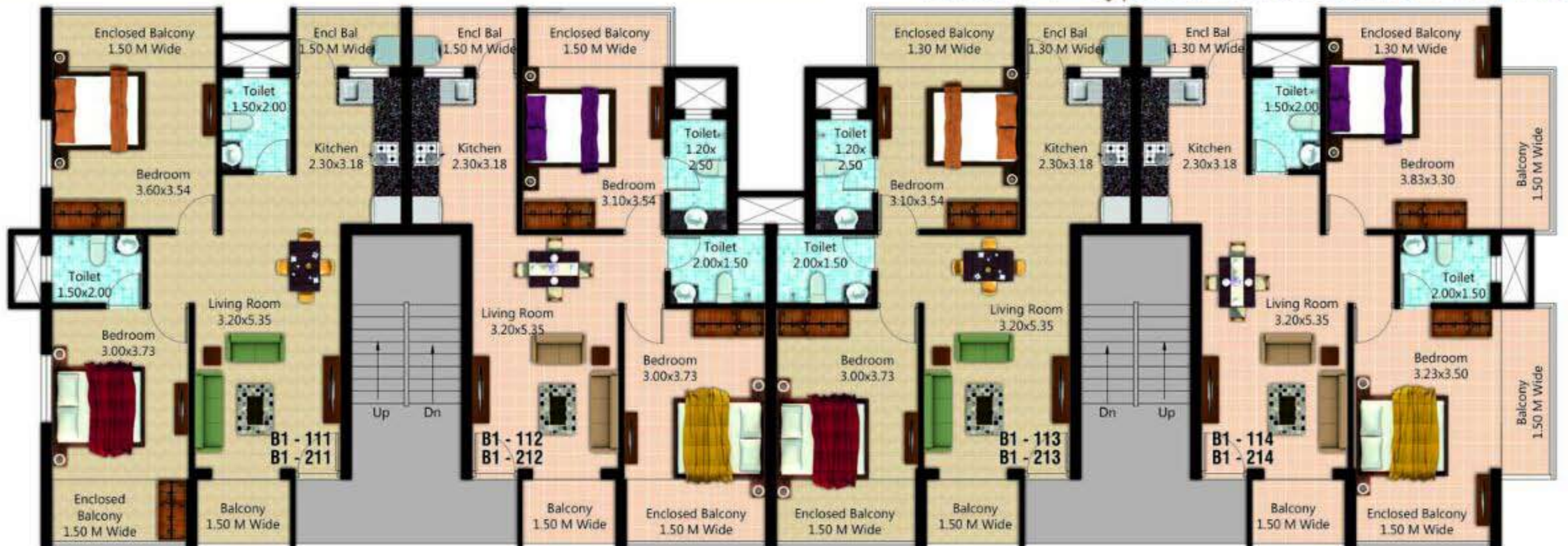
Block B1

Ground floor		
Flat nos.	Carpet Area	Super Built-up Area
B1 - 011	56.56 Sqm	70.31 Sqm
B1 - 012	53.28 Sqm	66.82 Sqm
First floor		
Flat nos.	Carpet Area	Super Built-up Area
B1 - 111	72.22 Sqm	89.41 Sqm
B1 - 112	68.38 Sqm	83.24 Sqm
B1 - 113	68.38 Sqm	83.24 Sqm
B1 - 114	73.75 Sqm	94.80 Sqm
Second floor		
Flat nos.	Carpet Area	Super Built-up Area
B1 - 211	72.22 Sqm	89.41 Sqm
B1 - 212	68.38 Sqm	83.24 Sqm + 22.34 Sqmt OT
B1 - 213	68.38 Sqm	83.24 Sqm + 22.34 Sqmt OT
B1 - 214	73.75 Sqm	94.80 Sqm



Block B1 - Ground Floor Plan

Block B1 - Typical First & Second Floor Plan



Location



Completed Phases



For Bookings Please Contact

Mrs. Senhora D'souza
7887582724



Chaudi Vaddo, Opposite St. Sebastian Sports Club, Marna Siolim, Bardez-goia 403517 (INDIA)
Email : info@aquariusdevelopersgoa.com, website : www.aquariusdevelopersgoa.com

Project Architect : Studio Archetype | Structural Engineer : Rajesh Mahambrey & Associates

Disclaimer : This is not an legal offering and all plans and visuals are an artist impression and subject to revision without prior notice and obligations